

# USER MANUAL

---



Set up and Operational instructions of the  
Holsim Coccygeal Vein Blood Sampling Kit



## Coccygeal Vein Blood Sampling Kit

Revision A:  
Bovine Coccygeal Vein  
Blood sampling

Product SKU:  
B700-K100

Last Updated:  
24 JUN 2024



# Parts List

## Equipment Required:

- Blood Sampling Tail
- Coccygeal Vein Insert
- Universal Stand
- tail Stand
- 2 Rubber mounts
- 4 Flat washers
- 4 Spring Washers
- 4 Nuts
- Holsim Constant Flow Blood Pump
- Holsim Artificial Blood

## You will need

- Desk or Table
- 13mm Hex Socket Drive
- Clamps
- Flat head screw driver

*For all other parts or repairs,  
please contact Holsim through  
our website. [www.holsim.co.nz](http://www.holsim.co.nz)*



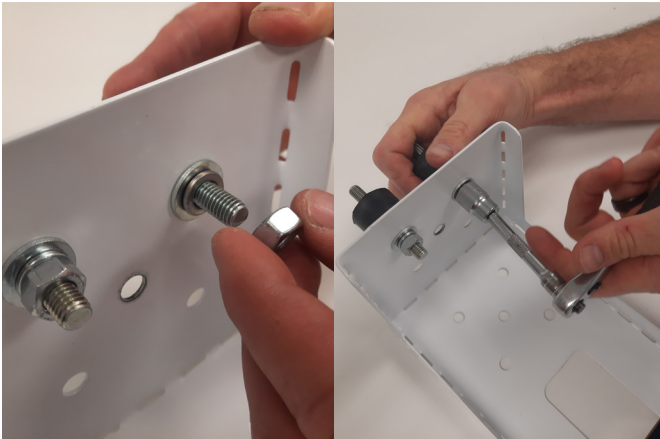
# The Parts





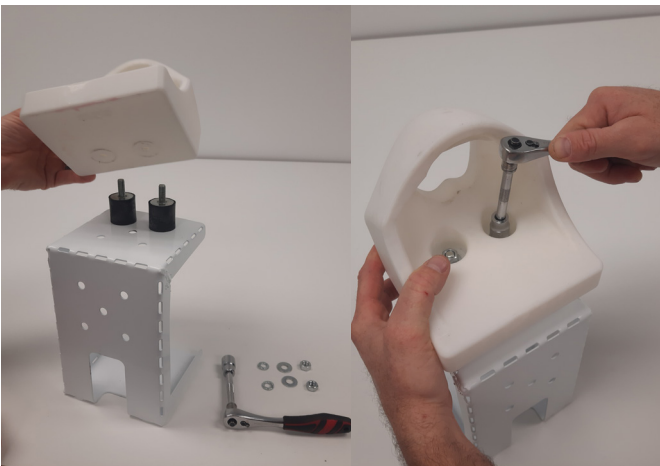
# The Set Up





**1 ATTACH RUBBER MOUNTS TO THE UNIVERSAL STAND .**

- Assemble 1 flat washer, 1 spring water, and then 1 nut.
- Hand tighten with socket drive



**2 ATTACH TAIL STAND TO THE RUBBER MOUNTS**

- Assemble 1 flat washer, 1 spring washer , and then 1 nut.
- Hand tighten with socket drive



## The Set Up



- 3** CLAMP STAND ASSEMBLY TO DESK OR TABLE.



- 4** APPLY LUBRICANT SUCH TO THE BACK OF THE INSERT INSIDE TH TAIL CAVITY
- Make sure the tubing run down the back of the vein insert and in line with the cavity in the tail.





5

**SLIDE THE BENT TUBE END OF THE COCCYGEAL VEIN INSERT INTO THE BOTTOM OF THE TAIL CAVITY**

- Make sure the tubing runs down the back of the vein insert and in line with the cavity in the tail.



6

**FLEX THE COCCYGEAL VEIN INSERT TO LOCATE IN THE TOP POCKET OF THE TAIL**

- Feed the tubing through the top tail pocket first.
- You may have to gently twist and wiggle the vein insert to achieve the correct fit.

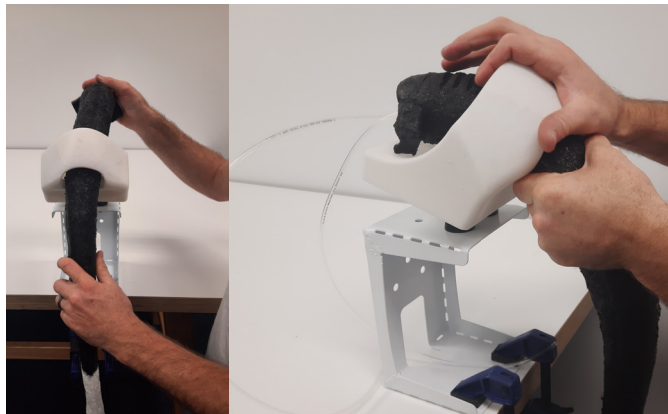


# The Set Up



## 7 CHECK THE TUBING AND CLIP LOCATE CORRECTLY

- Tubing should be aligned nicely in the channel and the silicone clip into the tail cut out



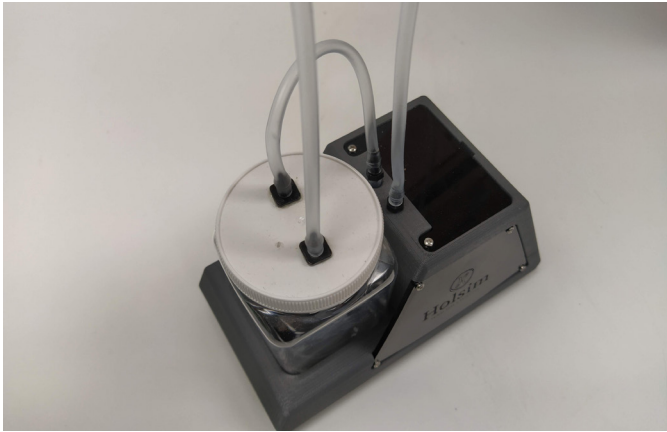
## 8 FEED THE TAIL THROUGH THE STAND



## 9 LOCATE IN PLACE

- Make sure the tubing run down the back of the vein insert and in line with the cavity in the tail.





## 10 SET UP THE BLOOD PUMP

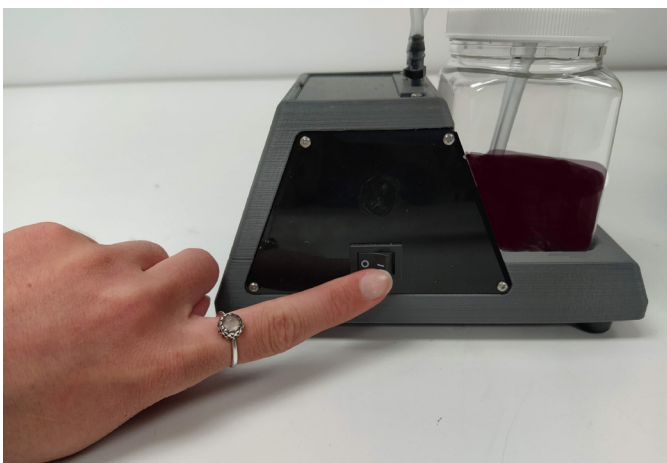
- Unscrew the lid and pour the Holsim Artificial Blood into the Holsim Blood Pump jar with tubing.
- Replace lid and tighten

NOTE: photos have been taken while using water



## 11 ATTACH TUBING TO BLOOD PUMP

- It does not matter which tube attaches to each end.



## 12 SWITCH BLOOD PUMP ON

- Switch the blood pump on
- The blood should slowly pulse through the tubing, into the Coccygeal Vein insert and back round into the jar
- This may take a minute



## In Use



**1** LIFT TAIL



**2** PALPATE THE VEIN TO LOCATE CORRECT POSITION

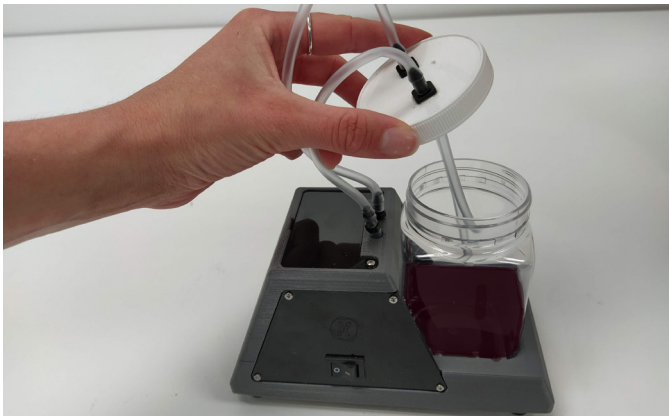


3

**INSERT NEEDLE TO DRAW BLOOD SAMPLE**

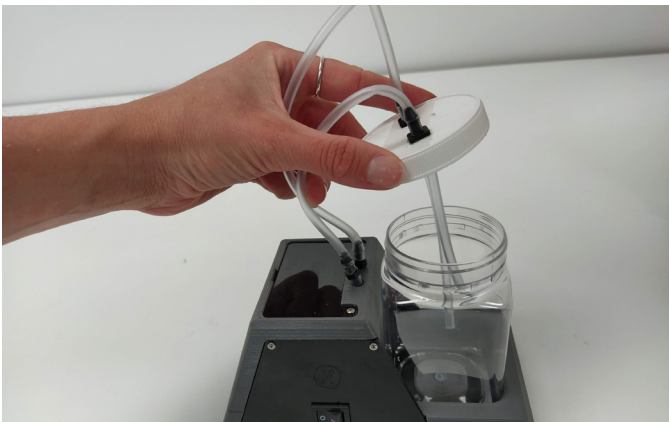


# Pack Down



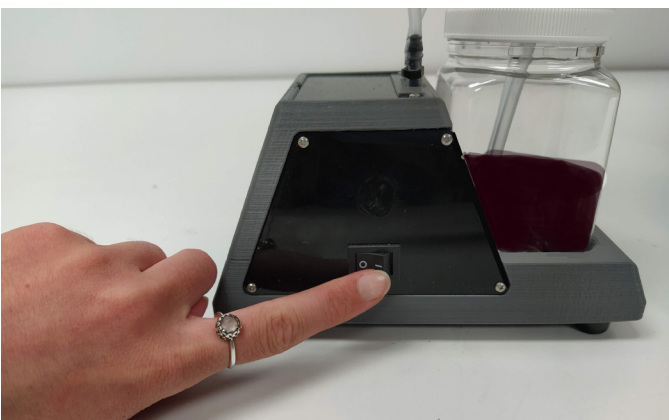
## 1 UNDO JAR LID

- Once the blood sample has been obtained, undo the jar lid with the pump connectors on it and hold the tubes above the blood in the jar



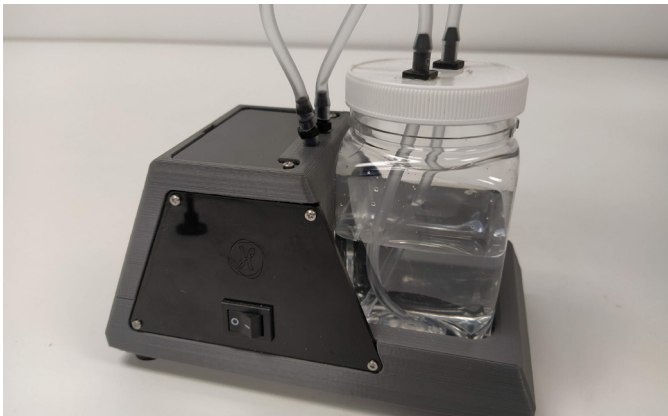
## 2 DRAIN TUBING

- With the jar tubing out of the blood, the pump will pulse the remaining blood in the tubes into the jar, without sucking any more blood up.



## 3 TURN PUMP OFF

- Once all the blood has drained from the tubing switch the pump off.



#### 4 FLUSH TUBING WITH WATER

- It is best to flush the tubing out with water, to have them clean before storing the pump.
- You can do this by replacing the jar of blood with one water. Turn the pump on to flush the tubing and vein.



#### 5 DISCONNECT PUMP

- Once clean, turn the pump off.
- Disconnect the blood pump tubing from the Coccygeal Vein insert tubing.

#### 6 PACK AWAY AND STORE

- Remove tail from stand if desired
- Wipe any blood from the surface of the model and allow tubing to dry.



# Holsim

34D Somerset Street, Hamilton, New Zealand, 3204



07 839 5018



info@holsim.co.nz